

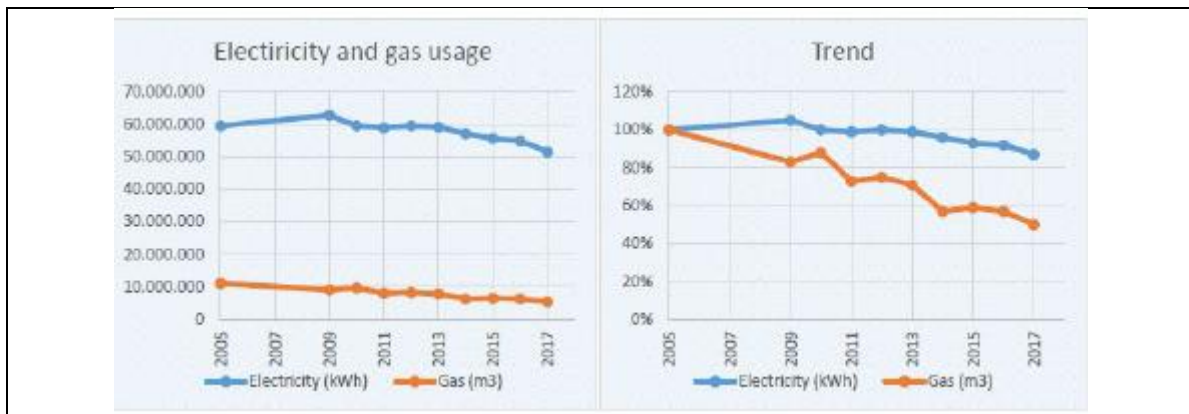


Template for Evidence(s) UI GreenMetric Questionnaire

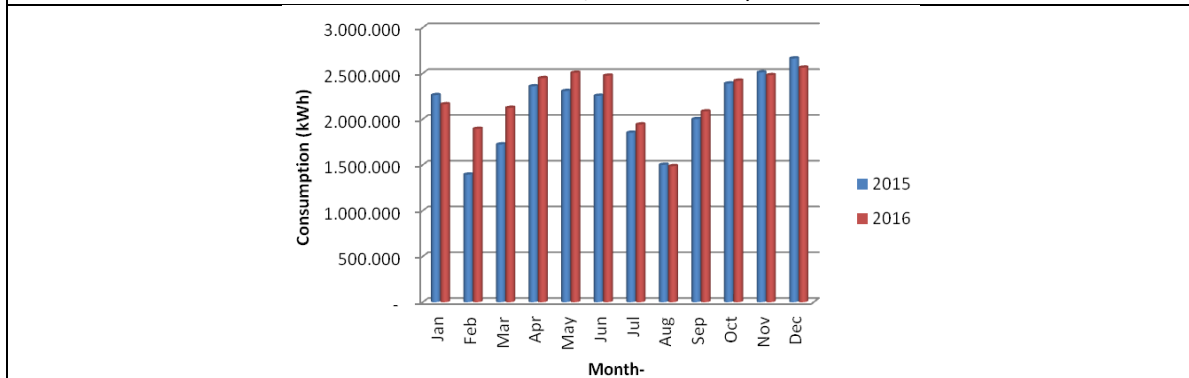
University : University of Samarra
 Country : Iraq
 Web Address : www.samarra.edu.iq

[2] Energy and Climate Change (EC)

[2.6] Electricity Usage per Year (in Kilowatt hour)



Example of Total Electricity and Gas Usage (All Locations) in 2005-2017 (Wageningen University & Research, Netherlands)



Example of Electricity Usage (kWh) on UI Depok Campus (Universitas Indonesia, Indonesia)

Description:

The total electricity usage of Samarra University Campus in 2017 is 525,000 kWh. On the main campus area of Samarra University, electricity is used for lighting, cooling, heating and laboratory appliances. For more information see the Energy paragraph of the University of Samarra 2017 Annual environmental report.

Key Adjustments Made:

The Exact Value: The figure 525,000 kWh is taken directly from the 2017 electricity data point in our generated matrix table, keeping your textbook's content completely synchronized with your charts.

Context Preservation: Kept the core academic operational uses (lighting, cooling, heating, and lab equipment) as they perfectly fit the functional infrastructure of Samarra University's scientific and humanitarian faculties.



Additional evidence link (i.e., for videos, more images, or other files that are not included in this file):